

ROTARY EVAPORATOR

STRIKE 20



STEROGLASS®

COMPANY WITH
QUALITY SYSTEM
CERTIFIED BY DNV
= ISO 9001 =

STEROGLASS s.r.l.
Via Romano di Sopra, 2/C

06132 - S.Martino in Campo
PERUGIA - ITALY
Tel. +39 075 60 90 91
Fax +39 075 60 90 950

http: www.steroglass.it
e-mail: info@steroglass.it

Authorized Dealer



ROTARY EVAPORATOR

STRIKE 20



STRIKE 20 is a 20lt rotary evaporator designed for industrial systems and R&D purposes. It meets all the process needs using 3.3 borosilicate glass and PTFE allowing aggressive substances treatment.

It works efficiently both under vacuum and any ambient conditions. The rotation of the 6, 10 or 20 lt evaporation flasks inside the heating bath results in a forced convection and homogenous distribution of the product, preventing sedimentation while ensuring high evaporation exchange surface. The sealing system guarantees perfect vacuum tightness and no maintenance.

Glassware can be tailored to meet Client's specific needs.

APPLICATIONS

- Distillation (continuous and discontinuous)
- Solvent recycling
- Reflux process reactions
- Component drying
- Fine chemical synthesis
- Crystallization
- Extractions
- Purifications
- R&D studies
- Scale-down processes

INDUSTRIES

- Pharmaceutical
- Chemical
- Cosmetic
- Herb extraction
- Food
- Research
- Petrochemical

TOTAL SAFETY SYSTEM

Strike 20 is supplied with a optional transparent protection shield for the evaporation flask. The special shaped and robust shield ensures utmost protection from evaporation flask breakage and spray during process at high temperature.

- The heating bath and the protective shield are lifted by an electronically monitored system.
- An automatic system lowers the heating bath in case of power failure, overheating and any other bad occurrences.
- Strike 20 is supplied with a rupture disk, a safety device, positioned on the glassware to prevent overpressure.

VACUUM SEALING SYSTEM

- Made of lubricating material allowing perfect vacuum tightness.
- No maintenance required

HEATING BATH

Lifted by means of a powered system, the heating bath, in case of power failure or alarms, goes automatically down to prevent fluid overheating, and the process will immediately stop. Its electric heater enhanced to 3Kw (<3W/Cm²) ensures continuous evaporation of a wide range of products even in critical working conditions.



ROTARY EVAPORATOR



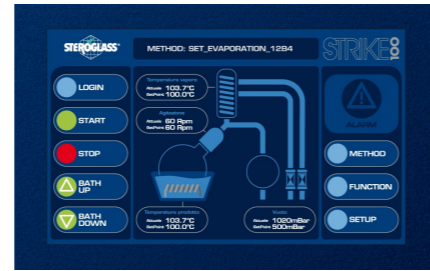
STRIKE 2

DISPLAY

The process operating parameters can be set and monitored on a 7" touch-screen display.

MEASUREMENT, DISPLAY AND DATA RECORDING OF THE FOLLOWING PARAMETERS:

- Set and actual temperature value of the bath
- Set and actual vapour temperature value
- Set and actual rotation speed value of the evaporation flask
- Set and actual vacuum value (vacuum controller included as standard)



Technical features

Heating bath	
Working range °C	[ambient ... 150]
Accuracy °C	+/- 2
Resolution °C	0.1
Set point	YES (1°C step)
Type of control	PID
Maximum oscillation during checkout °C	+/- 3
Power resistor KW	3
Heater power density	≤3W/cm2
Over-temperature protection	
Temperature sensor	PT100
Filling level	Manual
Vapour temperature	
Working range °C	[ambient ... 150]
Accuracy °C	+/- 2
Resolution °C	0.1
Temperature sensor	PT100
Rotation	
Working range Rpm	[10; 150]
Accuracy Rpm	+/- 2
Rotation speed reading	
Resolution Rpm	1
Vacuum control	
Working range mbar	[8; atmospheric]
Accuracy mbar	±5mbar
Resolution mbar	1
Absolute vacuum reading	
Display	Digital
Vacuum setting	
Lift system	
On/off	
Electric	

Interface	
Export data	
Remote control	
Alarms and controls	
Heating bath overheating	
Bath temperature exceeding set point	
Soft start rotation	
Rotation speed monitoring	
Safety status (rotation, lifting, heating=off)	
Evaporation flask protection	
Glassware	
20 Lt evaporation flask	
10 Lt evaporation flask	
6 Lt evaporation flask	
Collecting flasks: 2x6 Lt or 1x10lt	
Glassware configuration	Descending, reflux, customized
General features	
Cooler exchange surface (mq)	0.5
Over-pressure protection	
Protection with rupture disk	
Quick closing	
Dimensions (WxDxH mm)	1240x580x2060
Power supply	230Vac mono 3,4 Kw
Weight	150Kg
Vapours cycle maximum temperature	
Vapours cycle minimum temperature	
Vapours cycle Temp range	
Receipt/methods in memory	
Recipes customization	
Data acquisition on PC	
Remote Control	
Bath lowering in case of alarm	
Optional accessories	
Plastic coated glassware	
Evaporation flask protection shield	

ROTARY EVAPORATOR



STRIKE 2

HOW TO ORDER

CODE	CONFIGURATION
SQFU079737	STRIKE 20 descending glassware, 20 Lt evaporating flask 1x10 Lt collecting flask
SQFU079738	STRIKE 20 descending glassware, 20 Lt evaporating flask, 2x6 Lt collecting flasks
SQFU079735	STRIKE 20 reflux glassware, 20 Lt evaporating flask 1x10 Lt collecting flask
SQFU079736	STRIKE 20 reflux glassware, 20 Lt evaporating flask, 2x6lt collecting flasks
ACCESSORIES RECOMMENDED	
On demand	20lt Aluminium trolley for evaporating flask handling
IMNM017502	Whelch-Ilmvac PTFE Diaphragm pump MPC 301 Z – 2.3 m3/h ultimate pressure <mbar 8 – oil free
On demand	6lt Evaporation vessel for Strike 2000
On demand	10lt Evaporation vessel for Strike 2000
On demand	20lt Evaporation vessel for Strike 2000
On demand	20lt Evaporation vessel for POWDER
On demand	6lt Collecting plastic coated vessel
On demand	10lt Collecting plastic coated vessel
JUCG074937	CHILLER JULABO MODEL FL 1201 - 9661012 T range: -20°C +40°C (0,5°C stability) Cooling capacity: 1,2 kW ad +20°C; 0,3 kW at -20°C Flow rate (Pump): 23 L/min 1 bar



STEROGLASS S.r.l.
Strada Romano di Sopra 2/C, 06132 San Martino in Campo (PG), Italia
Tel. +3907560909-1 fax. +390756090950 e-mail. info@steroglass.it